

# Reflections | Memory Care Suite

319 S/F | One Bedroom | One Bath

## All-Inclusive Pricing & Amenities

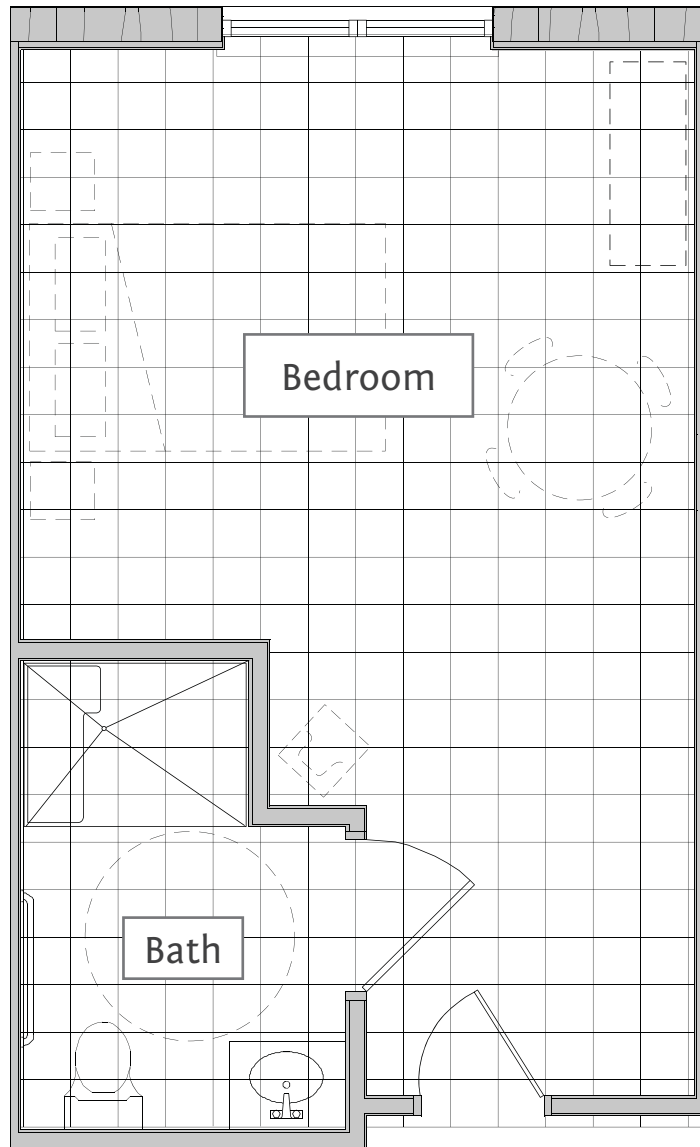
You will pay one rate for all your care while in Assisted Living and Memory Care. This easy All-Inclusive Pricing will allow you to budget more effectively and never worry about hidden fees or add-ons every month.

## Litchfield Advantage

- All-Inclusive Pricing in Assisted Living and
- Alzheimer's & Dementia Care
- 24/7 on-site registered nurse
- Pet friendly community
- Daily social calendar to stimulate the brain and body
- 24-hour emergency response system
- Evening campus security
- Concierge Service

## Features and Amenities

- Apartments - studio to two-bedrooms w/ private bathrooms
- Wellness Center w/ indoor, heated therapy pool
- Salon & Spa
- The Litchfield Dining Experience
- Full Service Bar
- Anytime snacks
- Courtyards, libraries and gathering rooms
- Maintenance-free living
- All utilities including cable and Wi-Fi



  
**THE RETREAT**  
AT THE LAKES AT LITCHFIELD

1 of 1  
Memory Care Floorplans

120 Lakes at Litchfield Drive  
Pawleys Island, SC 29585  
Phone: 843-235-9393  
[www.Lakes-Litchfield.com](http://www.Lakes-Litchfield.com)