

The Wisteria - Pawleys Pavilion | Assisted Living Suite

585 S/F | One Bedroom | One Bath

All-Inclusive Pricing & Amenities

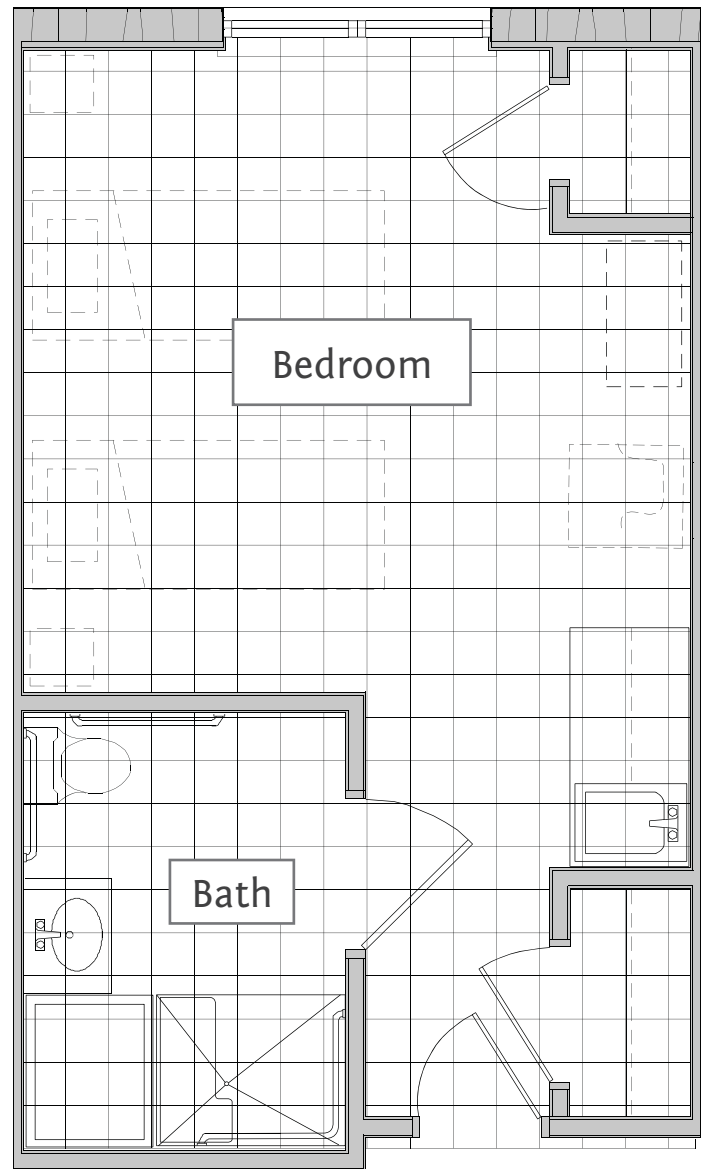
You will pay one rate for all your care while in Assisted Living and Memory Care. This easy All-Inclusive Pricing will allow you to budget more effectively and never worry about hidden fees or add-ons every month.

Litchfield Advantage

- All-Inclusive Pricing in Assisted Living and
- Alzheimer's & Dementia Care
- 24/7 on-site registered nurse
- Pet friendly community
- Daily social calendar to stimulate the brain and body
- 24-hour emergency response system
- Evening campus security
- Concierge Service

Features and Amenities

- Apartments - studio to two-bedrooms w/ private bathrooms
- Wellness Center w/ indoor, heated therapy pool
- Salon & Spa
- The Litchfield Dining Experience
- Full Service Bar
- Anytime snacks
- Courtyards, libraries and gathering rooms
- Maintenance-free living
- All utilities including cable and Wi-Fi




THE RETREAT
AT THE LAKES AT LITCHFIELD

5 of 5
Assisted Living Floorplans

120 Lakes at Litchfield Drive
Pawleys Island, SC 29585
Phone: 843-235-9393
www.Lakes-Litchfield.com